

Governor's Homes Available Soon!

FEATURES

- 3 Bedrooms
- 1 Bath, Finished
- Rough-in Bath in Lower Level
- Open Living, Dining, and Kitchen
- Oversized Garage
- Energy Efficient

Eight new homes utilizing the Governor's Houses will soon be available in four communities!

Projects are starting in Alexandria, Emery, Plankinton, and White Lake.

These communities offer excellent parks, recreation, and basic needs. It's a perfect solution for commuting families looking for the small town atmosphere!

The homes are available to QUALIFIED GOVERNOR'S HOUSE APPLICANTS.

Here are a couple of the designs that will be available!



If your community wants affordable housing development, contact Prairieland Housing Development soon!

If we find additional communities that are interested, eight units may be added in 2006.

Planning and Development District III
Prairieland Housing Development

PO Box 687
1808 Summit Street
Yankton, SD 57078

Phone: (605) 665-4408

Toll Free: (800) 952-3562

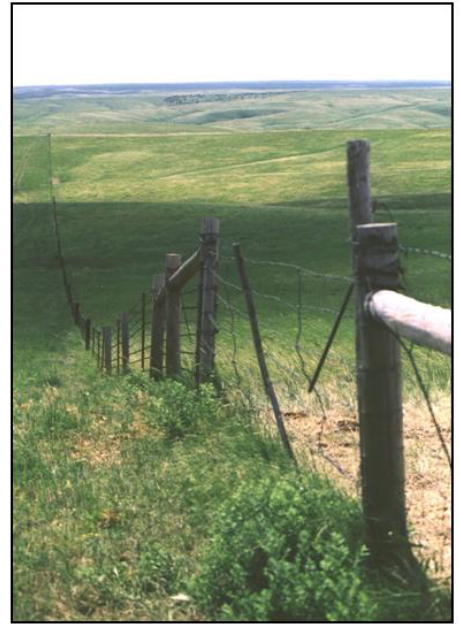
Fax: (605) 665-0303

E-mail: districtiii@districtiii.org

Website: www.districtiii.org



2005 Legislative Dinner Highlights



Buffet line

District III would like to thank those who were able to attend the 2005 Annual Legislative Dinner. The evening was a great success and the audience appreciated the participation of our state senators and representatives.



Dinner guests



Mayor of Mitchell, Alice Claggett, welcomes guests



District III Chairman, Arvid Olson, addresses guests at Legislative Forum



Legislative Forum (all three photos)