

# Planning & Development District III Digest

Volume 25, Issue 3

September 2007

## Funding for Recreational Projects

Trails for pedestrians and bicyclists are popular recreational assets in many communities throughout the state. Various funding sources are available to help cities and towns pay for the development of such trails; two sources frequently used are South Dakota Game, Fish, and Parks' Recreational Trail Program and Transportation Enhancement funding from the South Dakota Department of Transportation.



Recreational Trail Program (RTP) funds may be ideal for smaller-scale projects. In recent years, the average grant award has been about \$40,000, but grant awards of less than \$1,000 have been made. Communities can request RTP funding of up to 80% of the total

project cost, although a higher percentage of local match may be looked upon more favorably by grant reviewers. Schools are eligible grant recipients.

Some recently funded RTP projects in the District III region include the following:

- Trail improvement in the Gregory city park
- Trail improvement at the Corsica Lake campground in Douglas County
- Trail development on a property in Kimball that will become the Native Prairie Garden

Transportation Enhancement funds generally are used for projects that are fairly large in scale. The maximum grant amount awarded for projects is \$500,000, and the average award is over \$100,000. Approximately 20% of program funds are reserved for projects costing less than \$100,000. Projects are eligible for 81.95% of grant funding. Cities and counties are eligible grant recipients. Some recent examples of funded Transportation Enhancement projects in the District III area include:

- Trail development in the Lake Mitchell area
- Bike path development along Deer Boulevard in Yankton

**If you are interested in developing a recreational trail in your community, or improving an existing trail, please contact John at District III. □**

## Mitchell Technical Institute Proposal

Planning and Development District III recently assisted Mitchell Technical Institute (MTI) with an application for a Susan Harwood Training Grant offered through the U.S. Department of Labor – Occupational Safety and Health Administration (OSHA).



MTI applied for \$247,800 to develop **High-Voltage Safety Training**. The project will develop and deliver electrocution safety training to regional electrical, power line, heating/cooling, gas and telecommunication construction companies. Training will be specific to those employees working with high-voltage equipment.

High-voltage involves anything greater than 600 volts. Affected industries are not fully aware of the increased risks involved with high-voltage situations. The proposed training will assist industries by improving technical awareness and competencies, prevent deaths and injuries, and keep training in proportion to industry demands.

*(Continued on page 4)*

### INSIDE THIS ISSUE

2	Director's Corner
2	District III Announcements & Deadlines
2	New SBDC Business Consultant!
3	Getting Ready for the 2010 Census
5	SD GIS Support Organizations
5	GIS Services Information
5	Governor's House Program Guidelines
5	South Dakota Housing Program Info



## DIRECTOR'S CORNER

By Greg Henderson

### Hiring a Development Professional

Several communities have contacted us over the years about hiring local development staff. It is always a challenge to keep volunteers organized and energized. Many talented and committed people have experienced burn-out from being on the "front lines" too long. I have one piece of advice for communities that are considering taking the step of employing a development professional. **Think through the question of why you want a development person and be sure of what their primary function will be.** It is not unusual for people to believe that if they just had their own grant writer, the world of free money would be laid at their feet. An economic development position should not be focused on finding grants, especially if the expectation is paying for the job and other operational expenses.

District III has prospered, in large part, by writing applications and helping local governments work through red tape. We have done a good job, but our staff is limited. District personnel write proposals for non-profit organizations and community groups all the time. Our help in these situations is usually centered on the application process itself, not general funding research. Hiring a local person to prepare infrastructure related proposals would be a waste of time and money, since District III membership dues already cover that activity. Expecting someone to research foundations and special purpose programs for unique community needs may be productive if the benefits significantly exceed the costs. Again, the search for money as the main goal of a development position will probably lead to disappointment and frustration. My opinion is not related to protecting the District's grant writing "turf". Rather, I dislike seeing scarce human and financial resources spent on duplicating existing services or capabilities.

There may be value in hiring full or part time development people if the community is committed to actively retaining its economic viability and promoting growth from within existing businesses. Commitment implies other "C" words...such as communication, cooperation, and capital. Just the act of keeping what you already have is going to put your community ahead of the competition. Chasing out-of-town opportunities is a low percentage game. You have to be both very good and lucky. Success is measured in years, not months. Regardless of the approach, development work requires patience and persistence. The fact that communities want to do something is encouraging. We just need to be wise about how it happens. □

### New SBDC Business Consultant

District III is adding to the region's Small Business Development Center (SBDC) capabilities. Jaci Benjamin will be working with Sue, SBDC Regional Director, to enhance our business consulting services. Jaci comes to us after 18 years with state government; first with the Department of Social Services as a caseworker in Sioux Falls, then case manager in Yankton, and finally a transfer to the Department of Labor as the Career Center Manager for Clay and Union counties, with offices in Vermillion and North Sioux City. Jaci and her husband have also owned JBenji's Screen Printing and Embroidery in Hartington, Nebraska for the last 4 years. They are busy with their two children, Zach, age 12, and Brianna, age 9.



We are also entering into a new type of relationship with Dakota Wesleyan University which will allow us to partner with the Kelly Center for Entrepreneurship. We will be sharing more information on these new opportunities in the near future.

*We welcome Jaci to the SBDC and District III!*

### DISTRICT III ANNOUNCEMENTS & DEADLINES

- SEPTEMBER 3: LABOR DAY – OFFICE CLOSED
- SEPTEMBER 12: EXECUTIVE BOARD MEETING IN WAGNER
- SEPTEMBER 15: MARY CHILTON DAR APPLICATIONS DUE
- SEPTEMBER 17: BLACK HILLS DIGITAL MAPPING CONFERENCE BEGINS
- OCTOBER 1: DEADWOOD APPLICATIONS DUE  
HIGH ENERGY COST GRANT APPLICATIONS DUE  
STATE WATER PLAN APPLICATIONS DUE  
CONSOLIDATED APPLICATIONS DUE  
SOLID WASTE MANAGEMENT APPLICATIONS DUE
- OCTOBER 8: NATIVE AMERICAN DAY – OFFICE CLOSED
- OCTOBER 10: FULL COMMITTEE & EXECUTIVE BOARD MEETINGS IN BURKE
- OCTOBER 15: DENR SRF APPLICATIONS DUE

Your "one stop shop" for economic development is now easily accessible on-line. For information on...

- Funding Programs
- Planning Assistance
- Marketing Assistance
- Housing Programs
- GIS/Mapping Services
- Areawide Business Council
- Small Business Development Center
- Regional Classified Ads
- Census Information
- Business Support Services
- Tourism
- And Much More

Visit [www.districtiii.org](http://www.districtiii.org)

# Will Your Community Be Ready for the 2010 Census Local Update of Census Addresses (LUCA) Program?

The Local Update of the Census Addresses Program, also known as LUCA, is a decennial census geographic partnership program that will allow the U.S. Census Bureau to benefit from local knowledge in developing its Master Address File for the 2010 Decennial Census and as subsequent use for yearly ongoing household surveys. Tribal, state, and local governments can contribute to a complete enumeration of their communities by reviewing and updating the list of housing units and group quarters addresses that the Census Bureau will use to deliver 2010 Decennial Census questionnaires within their communities.

## Why is the LUCA Program important to your community?

An accurate population count starts with an up-to-date and accurate address list. Having a housing unit or group quarters address listed on the Master Address File ensures that the people residing at the address will be enumerated. A February 2003 Government Accountability Office report indicated that in fiscal year 2000, about \$283 billion in federal grant money was distributed to state and local governments by formula; states received their share of this money based in part on factors such as annual population estimates derived from the 1990 decennial census. When the population estimates were updated to reflect the 2000 census results, an additional \$388 million in federal grant funding went predominately to the 23 states that had above-average estimate revisions. Clearly the stakes are high and a complete count is vital to cities and towns nationwide.



## How is the LUCA Program administered?

The LUCA Program is made possible by the Census Address List Improvement Act of 1994 (Public Law 103-430) which provides an opportunity for designated representatives of tribal, state, and local governments to review the addresses contained on the census address list. The program operates as follows:

- Each invited government designates a LUCA liaison to review the portion of the census address list covering the area under its jurisdiction. The LUCA liaison will be subject to the same confidentiality requirements as census workers, which prohibits the disclosure of census information. The address list is confidential under Title 13 of the U.S. Code and participants must review a set of security guidelines and sign a confidentiality agreement promising to protect the confidentiality of the addresses.
- The Census Bureau will send the LUCA liaison an address list from the Master Address File, corresponding maps, and the address count list.
- In areas with city-style addresses, the LUCA liaison can update individual addresses on the list, as well as add addresses missing from the list. The Census Bureau will verify the updates during the Address Canvassing Operation and provide feedback to the participants about the results.

## LUCA Continued...

### What are the LUCA participation options?

There are three LUCA participation options for a government to choose from depending on factors such as the type of addressing within their government, access to an address list, willingness to sign a Title 13 confidentiality agreement, as well as their level of resources for conducting the review.

#### Option 1—Full Address List Review (Title 13 option)

This option requires a Title 13 confidentiality agreement and allows the participating government to update city-style addresses on the census address list and provide any city-style addresses that are missing from the list.

City-style addresses are those used for mailing or E-911 in a house number and street name format. In census blocks within a jurisdiction that contain non-city-style addresses (P.O. Box, RR and Box) the LUCA participant may challenge the count of addresses in each census block. After the Address Canvassing Operation validates the address changes, the participant will receive feedback on their submission and may appeal the results to an independent LUCA appeals office that will adjudicate the differences.

#### Option 2—Local Address List Submission (Title 13 option)

This option may be selected by governments that have city-style addressing (mailing or E-911) but do not wish to update the Census Bureau's address list. The participating government submits its list of city-style addresses assigned to the census blocks within its jurisdiction in a Census Bureau predefined format. The Census Bureau will provide Option 2 participants with the census address list and maps as a reference, which is why a Title 13 confidentiality agreement is required. After the Address Canvassing Operation validates the participant's address list submission, the participant will receive feedback on each address submitted to the Census Bureau. If the participant does not agree with the Census Bureau's decision, the government may appeal the results to an independent LUCA appeals office that will adjudicate the differences.

#### Option 3—Local Address List Submission (Non-Title 13 option)

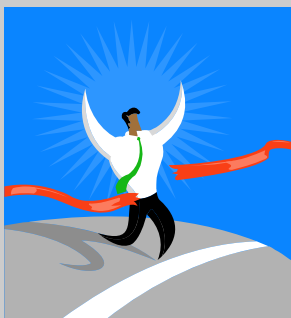
This option may be selected by governments that have city-style addressing (mailing or E-911) but do not wish to update the Census Bureau's address list and do not wish to sign a confidentiality agreement, or cannot meet the Census Bureau's security guidelines for protecting Title 13 information. This option allows the participating government to help improve the census address list by submitting its city-style addresses coded to the census blocks within its jurisdiction. The Census Bureau will provide Option 3 participants with maps and counts of addresses for each census block within its jurisdiction. After the Address Canvassing Operation validates the participant's submission, the participant will receive updated maps and counts of addresses by census block. The results under Option 3 cannot be appealed since the participant will not be able to tell the independent appeals office which addresses are missing from the census address list.

**If you'd like to inquire how District III can assist you with preparation for the 2010 Census, please contact our office. For additional information about the LUCA program, visit [www.census.gov](http://www.census.gov).**

Publication adapted from [www.census.gov/geo/www/luca2010/luca.html](http://www.census.gov/geo/www/luca2010/luca.html)

### Argue With Success

When things go right for your group, don't just let them go. Find out why they went right and how you can replicate that. For example, suppose your employees finish a monthly task in half the usual time. Recognize their efforts - then ask why.



Did some equipment or software work better? Were more people available? Did you get better cooperation from other departments? Were your supervisors more involved? Less? In other words, make the most of your success.

Adapted from *Be the Leader*, by Paul B. Thornton (Griffin Publishing Group).

### MTI Proposal Continued...

Specific training elements will include, but are not limited to:

- Identification of electrocution hazards in and/or around high-voltage equipment
- Lock-Out, Tag-Out of high-voltage equipment
- Selection of tools and safety gear required to safely work in and/or around high-voltage equipment
- Proper use of tools and safety gear while working in and/or around energized high-voltage equipment
- Safely energizing high-voltage equipment after installation

There is approximately \$10.1 million available for this grant category. The average federal award is expected to be \$175,000. Grants will be awarded for 12 month periods beginning in September, 2007. Applicants are not required to provide any "match" funds for this solicitation. □

# South Dakota GIS Support Organizations

South Dakota is still relatively new to GIS technology. Thankfully, there are a few not-for-profit Geographic Information System (GIS) support organizations available to help counties, cities, and tribal governments develop this tool.

The Black Hills Digital Mapping Association, located in Rapid City, originated in the early 1990's because of a need for the development of digital data in the Black Hills area. The local county governments, state officials, and personnel from US Forest Service and USGS worked together to gather the necessary data and share the cost of the project. This group ultimately became the Black Hills Digital Mapping Association, and continues to meet regularly to network with others around the state, learn about the newest technology, receive training, and provide opportunities to share data. There is basic information available at this website. [www.sdgs.usd.edu/bhdma/](http://www.sdgs.usd.edu/bhdma/)

The Spatial Technology Consortium (STC) is a state-wide organization that was established to bring all levels of government together (state, county, city, Tribal, and other special districts) to share information about the uses of GIS and help those that are implementing a new GIS. There is an annual conference held and all levels of government assist in the planning and training. There are various tracks offered, so that training is available to GIS users at all skill levels. For information or to be added to the STC mailing list, contact Harry at District III.



*STC Conference attendees look over District III GIS display materials.*

*(continued right...)*



Harry Redman, GIS Coordinator  
Travis Acklin, GIS Specialist

## AVAILABLE SERVICES:

- Internet Mapping System <http://ims.districtiii.org>
- Parcel Mapping
- Plat Mapping
- E911 Rural Addressing
- Global Positioning System (GPS) Services
- Geocoding (Address location like MapQuest)
- GPS Sign Inventory for Highway/Road Department
- Hazardous Materials (HazMat) Mapping
- General GPS/GIS Mapping
- GIS Training

District III is also a great source of GIS support. District III provides regular, on-going GIS support to the entire 15-county service area, and is also serving four additional counties for specific projects. District III and First District Association of Local Governments (1<sup>st</sup> District) partner together on various projects across the state. Furthermore, District III can provide assistance with software installation, ArcMap training, data maintenance, data conversion, software (vendor) recommendations or on and off site technical support. District III and 1<sup>st</sup> District are a "One Stop Service Shop" when it comes to GIS. □

## Governor's House Program

The following guidelines are effective as of March 2007:

- The price of the home is **\$33,000**
- Households of 2 OR LESS must have an income less than **\$31,980**.
- Households of 3 OR MORE must have an income less than **\$37,310**.
- Households UNDER 62 YEARS OF AGE must have a net worth less than **\$90,000**, of which no more than **\$70,000** may be in liquid assets.
- Households OVER 62 YEARS OF AGE must have a net worth less than **\$175,000**, of which no more than **\$100,000** may be in liquid assets.

To learn more about the Governor's House Program, call Eric at the District III office. □

## Building a Better Quality of Life



HOMEOWNERSHIP OPPORTUNITIES



DOWNPAYMENT & CLOSING COST ASSISTANCE



HOME IMPROVEMENT LOANS



HOMEBUYER EDUCATION & COUNSELING



P.O. BOX 1237 • PIERRE, SD 57501-1237  
PHONE: (605) 773-3181 • FAX: (605) 773-5154  
TTY: (605) 773-6107 • [www.sdhda.org](http://www.sdhda.org)



## EXECUTIVE BOARD:

**ARVID OLSON**, SANBORN COUNTY

**DELAYNE PERSSON**, AURORA COUNTY

**REX WINTER**, SOUTH CENTRAL WATER DEVELOPMENT DISTRICT

**ARTHUR HERTZ**, GREAT LAKES OF SOUTH DAKOTA ASSOCIATION

**CHARLES BRYAN**, CITY OF AVON

**JUDD LINDQUIST**, BRULE COUNTY

**RICHARD ZIEGLER**, DAVISON COUNTY

**RON SULLY**, LAKE ANDES

## ORGANIZATION:

Planning & Development District III is a voluntary association of city and county governments. A committee of elected officials and private citizens govern the agency by setting the work agenda and overseeing the performance of the Director and staff. The office serves a 15-county area that includes the following counties: Aurora, Bon Homme, Brule, Buffalo, Charles Mix, Davison, Douglas, Gregory, Hanson, Hutchinson, Jerauld, Lyman, Sanborn, Tripp, and Yankton. There are 68 communities and three tribal governments within the service area.

*\*If you would like to receive this publication in full color, digital format via email, please contact our office.\**

### PLANNING & DEVELOPMENT DISTRICT III

1808 Summit Street

PO Box 687

Yankton, SD 57078

ADDRESS CORRECTION REQUESTED

## THE STAFF:

### **Greg Henderson, Executive Director**

Travis Acklin, GIS Specialist

Eric Ambroson, Planner II

Jaci Benjamin, SBDC Business Consultant

John Clem, Planner II

Lori Cowman, Planner III

Pat Hansen, Finance Officer

Kim King, Administrative Assistant

Brian McGinnis, Planner III

Harry Redman, GIS Coordinator, GISP

Annette Roux, Office Manager

Sue Stoll, SBDC Director (605)665-0751

Telephone: (605) 665-4408

(800) 952-3562

Fax: (605) 665-0303

General E-Mail: [districtiii@districtiii.org](mailto:districtiii@districtiii.org)

Web Page: [www.districtiii.org](http://www.districtiii.org)

*A final thought...*

***"I would not waste my life in friction when it could be turned into momentum."***

*-- Frances Willard (1839-1898)*